



Facility Access for People with Mobility Disabilities

ABSTRACT

This report aimed at providing accessibility information of the various facilities in Alfaisal University for People with Mobility Disabilities.

Dr. Malek Almobarek
Senior Facility Manager

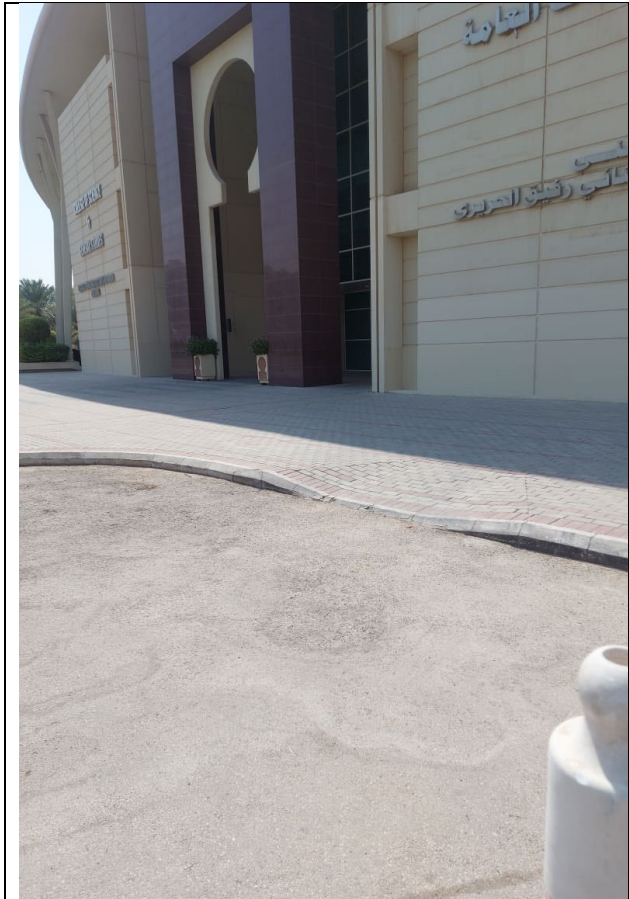
INTRODUCTION

Accessibility is the compatibility of an environment to people's functional capacities that allows them to benefit from facilities and services. Among the People with Disability (PwD), the inadequacy of accessibility limits their physical engagement with the outdoor world. The participation of (PwD) in society is considered mandatory to promote equalization and it is the right of every PwD to pursue higher education at any reputed institute such as Alfaisal. With this in mind, Alfaisal campus was designed and built to provide trouble free access to various facilities for PwDs. Some of such arrangements are listed below.

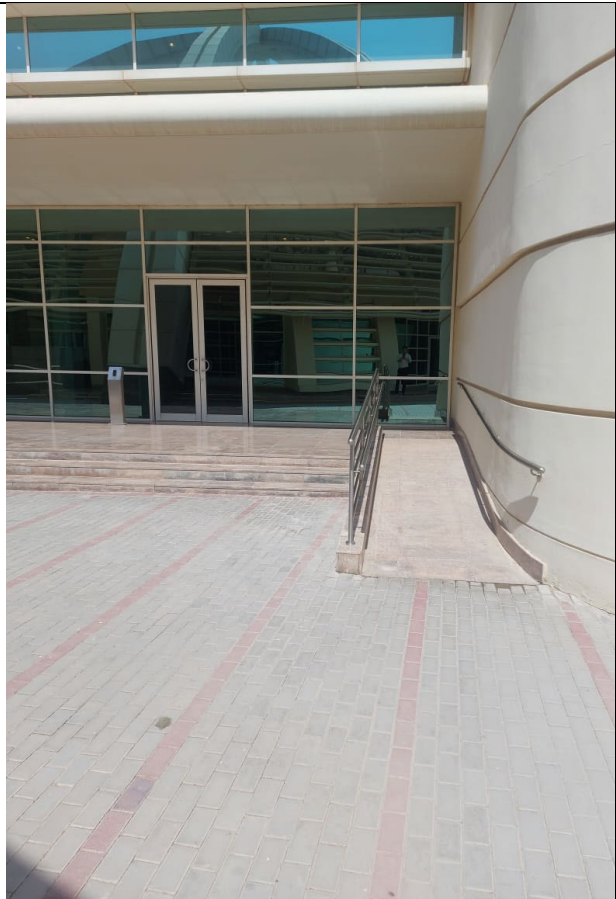
FACILITIES FOR PwDs

RAMPS

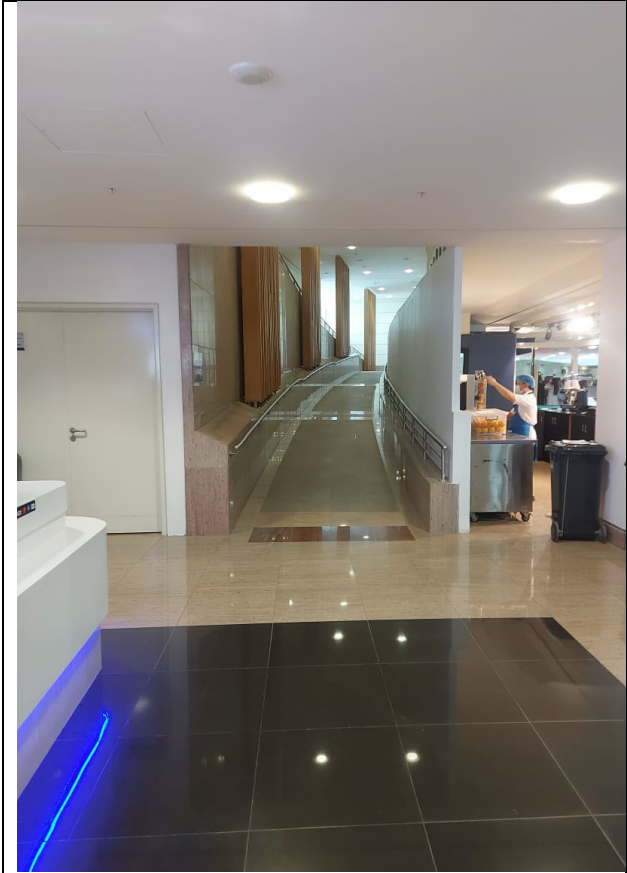
There are ramps built across the campus for use by PwDs to enter buildings and access various facilities such as classrooms, laboratories, auditorium, food courts, ATMs, toilets, library, lifts, etc.



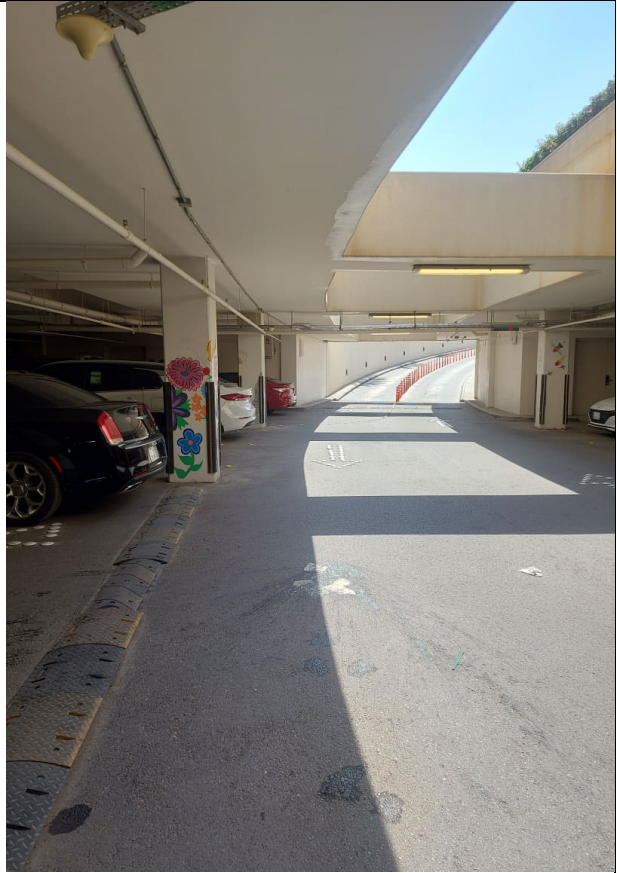
Ramp @ Building's entrance



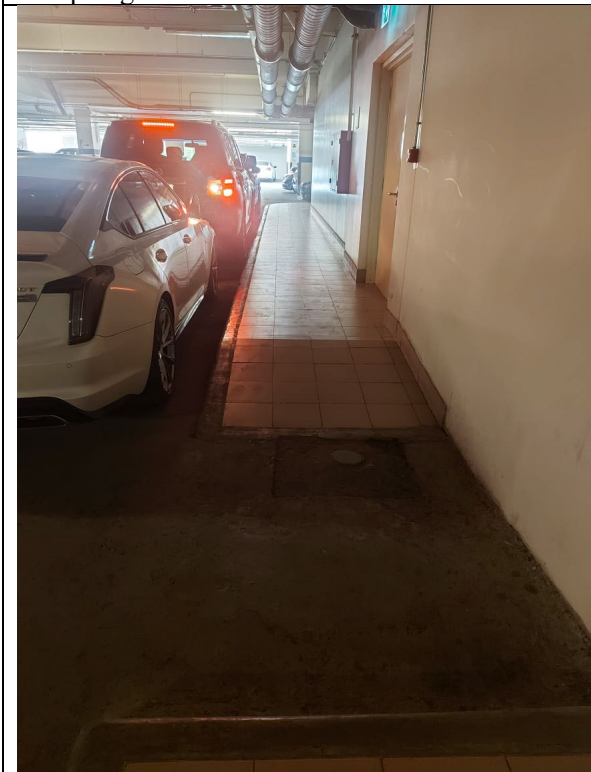
Ramp leading to a building



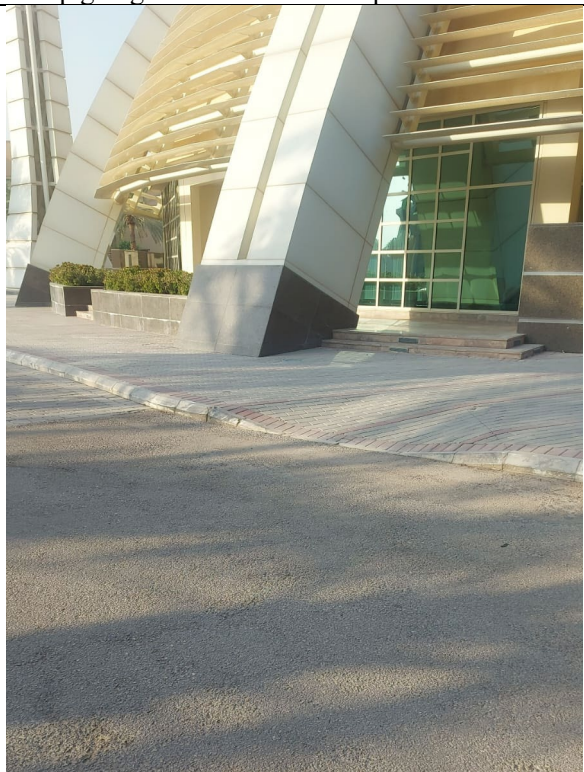
Ramp to go to 1st floor from GF



Ramp going to the Basement carpark



Ramp to be used to go to an elevator in carpark



Ramp going to Mosque and Clinic

Carpark Bays

Designated carpark bays are provided for PwDs in the basement car park as well as in the outdoor parking lots.



Toilets/ Washrooms

Fully fitted disabled toilets are spread across all campus buildings.



Reception

Easily accessible receptions are located at various locations where PwDs can go and discuss their needs.



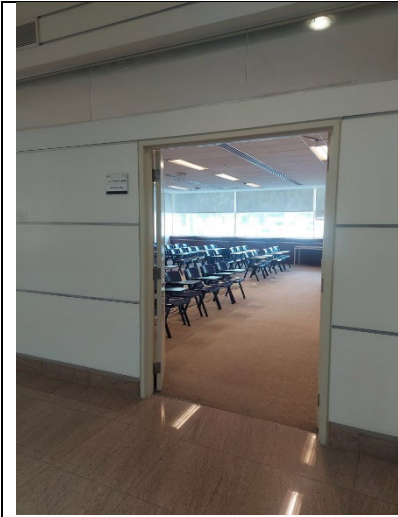
Food court and ATM

Food court and ATMs are placed conveniently to be accessed by PwDs.



Classrooms, Laboratories, Library, and Clinic

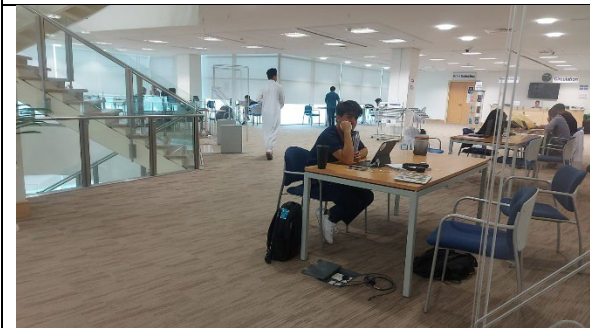
The above facilities provide PwDs unhindered access.



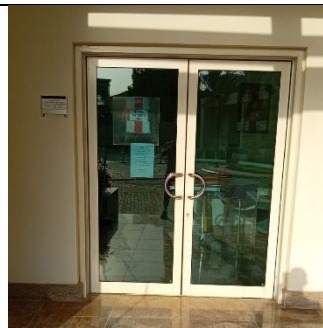
No obstruction @the door to enter the classrooms



No obstruction @the door to enter the laboratories



Trouble free access to library from elevator



Clinic entrance

Elevators

All elevators are suitable for use by PwDs.



Note: Facilities and arrangements have been highlighted in the enclosed floor map.

